



CheckMate

**Metaverse Platform
Users Guide**



Funded by
the European Union

ABOUT THE CHECKMATE PROJECT

In the contemporary digital age, the pervasive spread of propaganda, misinformation, and fake news poses significant threats to societal cohesion and the integrity of democratic systems. These malicious forms of information have the potential to polarize public opinion, creating deep divisions within communities and undermining social harmony. Moreover, they can incite violent extremism by spreading ideologies and narratives that fuel hatred and aggression. Hate speech, often a byproduct of such misinformation, further exacerbates social tensions and marginalizes vulnerable groups. Collectively, these factors contribute to the erosion of democratic foundations, as trust in democratic processes and institutions diminishes, and the public's ability to engage in informed and rational discourse is compromised.

The CheckMate project, co-funded by the European Union, emerges as a crucial initiative aimed at countering these multifaceted threats. It anticipates the creation of a best practices report on tackling misinformation and strengthening media literacy, the establishment of a CheckMate network, and the execution of information sessions and workshops to promote social dialogue and innovative solutions to misinformation. Furthermore, the project aims to produce an open-source e-course designed to enhance critical media literacy skills for adults and develop technological tools such as a metaverse platform and a web browsing extension.

Action:

KA220-ADU - Cooperation partnerships in adult education

Grand Agreement Number:

2023-1-AT01-KA220-ADU-000155104

Funded by: Erasmus +

Coordinated by:

BürgerInnen Forum Europa, Austria

Project Partners:

Neapolis University, Cyprus

Athens Lifelong Learning Institute, Greece

Centro Per Lo Sviluppo Creativo Danilo Dolci, Italy

Vsi Socialiniu inovaciju centras, Lithuania

Syncnify, France





NETWORKING AND WORKSHOPS IN THE METAVERSE

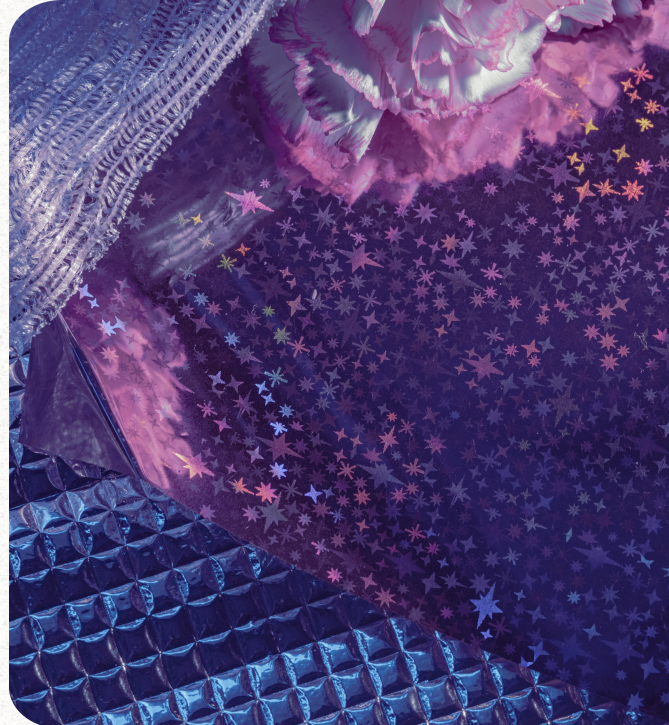
The utilization of innovative technological platforms like the metaverse holds significant potential in combating media misinformation and raising awareness about its pervasive impacts. In the need's identification process, partners of the CheckMate project recognized that one of the primary drivers behind the rapid spread of misinformation is societal alienation.

This alienation contributes to the fragmentation of social connections and hinders the dissemination of accurate information. By leveraging the metaverse, CheckMate aims to rekindle the relationship between direct and indirect stakeholders, fostering a collaborative environment where diverse organizations and companies from various disciplines and socio-economic backgrounds can come together.

Through this interconnected network, CheckMate intends to equip stakeholders with the tools and knowledge necessary to become proactive agents in engineering solutions for tomorrow's challenges. The metaverse platform will serve as a dynamic space for stakeholders to engage in meaningful dialogue, share innovative ideas, and ideate on concepts aimed at promoting responsible journalism and media practices.

Moreover, the development and use of this environment aims to promote the adoption of cutting-edge technological solutions to modern problems, facilitate virtual collaboration, and improve communication through various digital tools. By harnessing the potential of these advanced technologies, the metaverse will offer stakeholders the ability to personalize and customize their user experiences, making interactions more engaging and productive.

 CheckMate



TECHNOLOGY USED

The space that hosts the metaverse environment is Spatial.io, a cutting-edge virtual reality platform designed to facilitate immersive and interactive experiences. Spatial.io offers a versatile and user-friendly interface, allowing participants to seamlessly navigate and engage within the metaverse. With robust features for communication, collaboration, and content creation, Spatial.io serves as the backbone of our virtual environment, supporting a wide range of activities from educational workshops to live presentations. The platform's advanced capabilities, such as high-definition video streaming, real-time interaction tools, and customizable virtual areas, will ensure that users can fully leverage the potential of the designed virtual space for both professional and personal use.

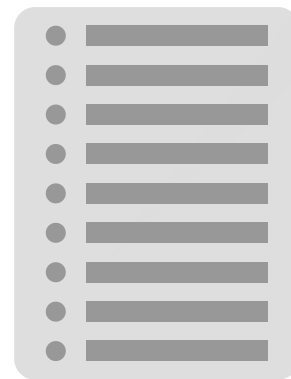
Spatial.io is well known for its ability to transform how people collaborate and interact in a digital environment. Originally developed as a tool for remote collaboration, Spatial.io has evolved to support various applications, including virtual events, art galleries, and social gatherings. The platform integrates seamlessly with popular tools like Slack, Microsoft Teams, and Google Workspace, enhancing its functionality and making it easier for users to incorporate it into their existing workflows. Its immersive 3D environments provide a realistic sense of presence, making virtual interactions feel as natural and engaging as in-person meetings. With a commitment to innovation and user experience, Spatial.io continues to be at the forefront of virtual reality technology, enabling users to explore new dimensions of connectivity and creativity.

Website: <https://www.spatial.io>

It is important to note that Spatial.io is not a project partner of this initiative and cannot be held responsible for any of the content or activities that take place within the metaverse environment. Syncnify (FR), the responsible partner for developing this immersive experience, utilized the services of Spatial.io to create the virtual space.

CHECKMATE METAVERSE

REGISTRATION PROCESS

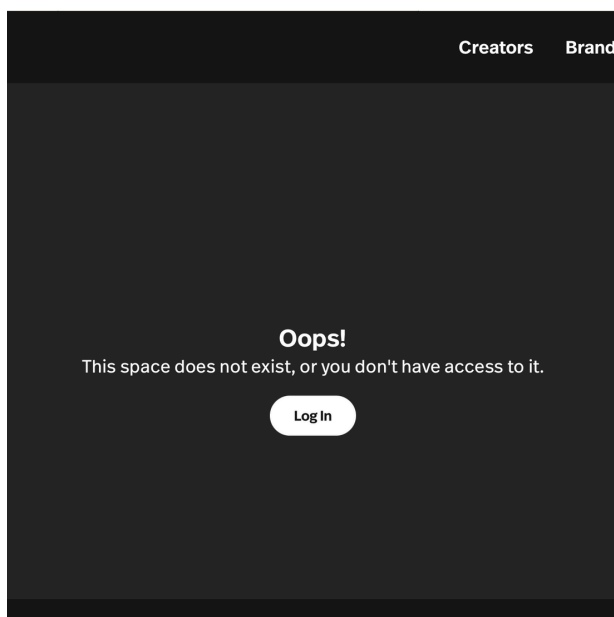


1. **Access the Registration Link:** Begin by clicking on the following link:

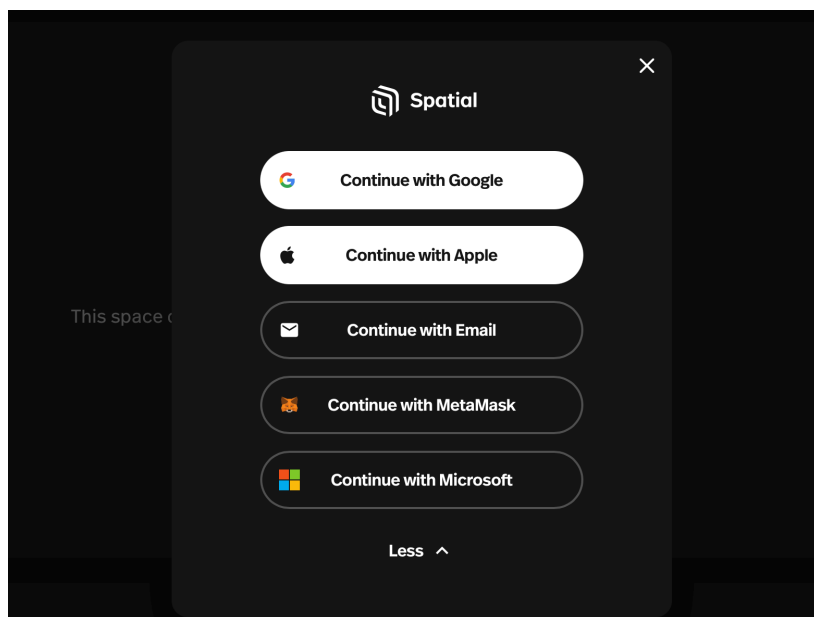
<https://www.spatial.io/s/Checkmate-665f8b147d893fee1d8e65cb> using your default web browser. For the best experience, we strongly recommend using Google Chrome. If you encounter the message, "The space does not exist, or you don't have access to it" do not be discouraged. This indicates that you do not yet have an account on Spatial.io and will need to create one. Rest assured, the process is quick and straightforward.

2. **Log-In or Create an Account:** Select the 'Log-In' option. You will be prompted to either log in to an existing account or create a new one. If you are creating a new account, select one of the provided email options. A pop-up window will appear, instructing you to 'Set up your account' by choosing a username. After entering your desired username and accepting the terms and conditions, click 'Next'. Your account setup is now complete.

3. **Access the Metaverse Environment:** If you are not automatically redirected to the metaverse environment, simply click the link provided in Step 1 again. Please note that it may take some time (approximately 15-30 seconds) for the metaverse environment to load fully. Be patient as the virtual space initializes, and then you will be able to immerse yourself in the Checkmate experience.



LOG IN PAGE



SIGN UP PAGE



METaverse PLATFORM FUNCTIONALITIES

1. Avatar Customization:

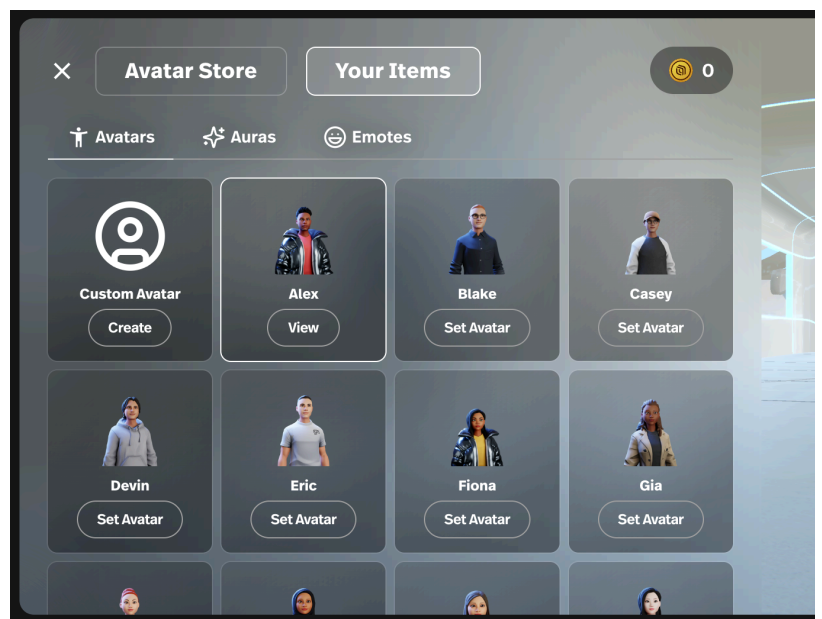
Upon registration, users are given the opportunity to customize their own avatars by selecting the 'Edit Avatar' option located at the top right corner of the screen. By clicking on this option, users are redirected to the 'Avatar Store,' a dedicated section within the metaverse that offers a wide range of customization features. The Avatar Store provides both premium and free options for avatar customization, allowing users to personalize their virtual representations according to their preferences and style.

To tailor their appearance using free features, users can navigate to 'Your Items' and then select 'Custom Avatar.' This section includes a variety of customization options such as hairstyles, clothing, accessories, and other avatar attributes, enabling you to create a unique and individualized avatar without incurring any costs.

It is important to note that the metaverse platform is built using an external service, Spatial.io. Consequently, any costs associated with premium features are managed by Spatial.io and are not linked to the CheckMate project or any of its participating partners. This distinction ensures transparency and clarifies that the customization expenses for premium features are independent of the project's funding and objectives.



EDIT AVATAR OPTION



CUSTOMIZE AVATAR FUNCTION



METaverse PLATFORM FUNCTIONALITIES

2. Voice and Text Chat Among Participants:

Voice and text chat functionalities are integral features within the metaverse, enabling seamless communication among participants. At all times, users can engage in both voice and text chats with other participants, facilitating real-time interactions and fostering a collaborative environment. To activate the voice chat function, users simply click on the three dots located at the upper right corner of the screen, which allows them to turn on their microphone.

3. Camera Feature and Filming:

The metaverse also includes camera features and filming tools that enhance user interactions and allow for the documentation of virtual experiences. In a manner similar to activating voice chat, users can select the options 'Turn on Camera' and 'Filming Tools' to enable video communication and recording. By choosing 'Turn on Camera,' users can broadcast their video feed to other participants, making interactions more personal and engaging by allowing face-to-face communication within the virtual environment. The 'Filming Tools' option permits users to capture and document their activities and experiences within the metaverse. This feature allows participants to record parts of their virtual journey, which can then be shared with others or reviewed later.



VOICE AND CAMERA OPTIONS

CHECKMATE METAVERSE

METaverse PLATFORM FUNCTIONALITIES



4. Viewing Screen:

To enhance your viewing experience, you can either click the maximize button located in the bottom right corner of the screen or use the keyboard shortcuts for zooming in and out. This allows you to adjust the screen size for an optimal view.

5. NPCs and Interactive Displays:

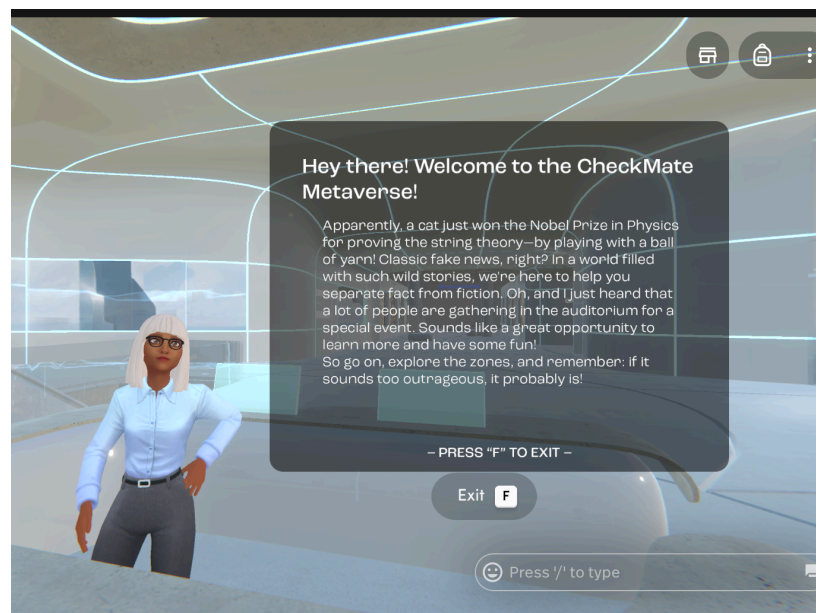
In certain areas of the metaverse environment, users will encounter non-Player Characters (NPCs) or interactive displays designed to enhance their experience and provide valuable information. Interacting with these elements is straightforward and intuitive, ensuring a seamless user experience. Options to interact will be clearly visible and accessible, typically highlighted or accompanied by prompts that indicate available actions.

6. Space Navigation:

Navigating through the various spaces of the metaverse environment is designed to be easy and user-friendly, thanks to strategically placed signs that guide users throughout the virtual world. These signs are positioned in key locations to provide clear directions and information, making it easy for participants to find their way to different areas such as virtual galleries, educational hubs, and interactive displays.



SPACE NAVIGATION



INTERACTIVE DISPLAYS

CHECKMATE METAVERSE

METAVERSE PLATFORM AREAS



LANDING AREA



INFORMATIVE INSIGHTS AREA

1. Pre-defined Avatars/ Non-player characters:

Pre-defined Avatars/Non-player characters (NPCs) play a crucial role in enhancing user engagement and interaction within the metaverse environment. Two such pre-defined avatars or NPCs are strategically placed within this virtual space to welcome users and guide them through their initial experiences.

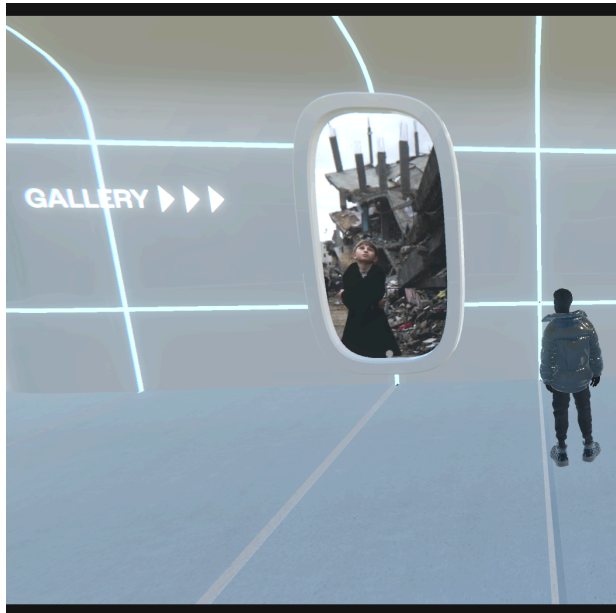
Upon entering the metaverse, users are greeted by these avatars, which are designed to offer a friendly and informative introduction to the virtual environment. In addition to welcoming users, these pre-defined avatars or NPCs play an active role in inviting users to explore the different areas of the metaverse.

2. Informative Insights:

The metaverse features statistical data that reveal broader trends in misinformation. Four primary data points are displayed, each providing insights into different aspects of the spread and impact of misinformation.

These points are designed to be both informative and accessible, helping participants to grasp statistical trends through clear statements. Furthermore, the metaverse includes additional displays that offer information about the project partners involved in the CheckMate initiative.

METAVERSE PLATFORM AREAS



DIGITAL EXHIBITIONS AREA



VIRTUAL MUSEUM AREA

3. Digital Exhibitions:

In addition to data points, virtual galleries or display areas are dedicated to showcasing real examples of fake news, providing participants with a comprehensive understanding of the dynamics and consequences of misinformation. Eight carefully selected cases of fake news are displayed, each accompanied by a detailed analysis.

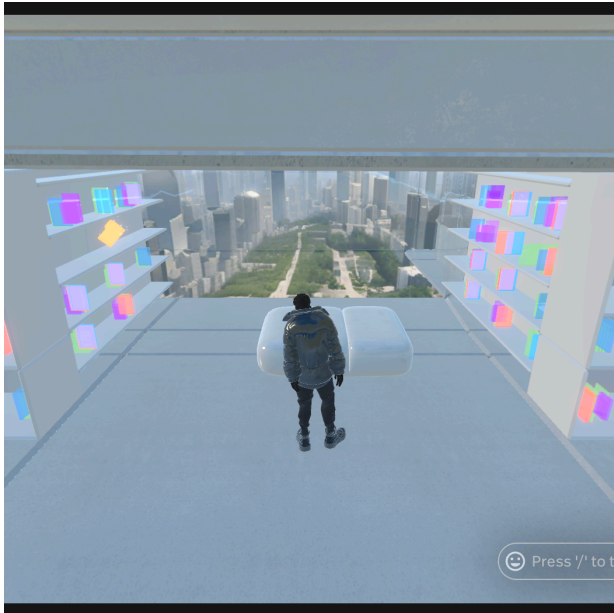
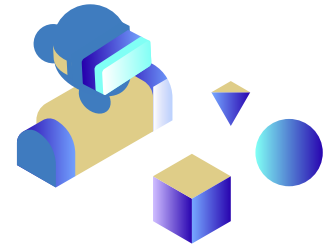
These exhibitions are designed to be highly interactive, allowing participants to engage with the content in a meaningful way. Through these immersive experiences, participants can see firsthand how misinformation can distort public perception, influence behavior, and potentially lead to significant societal consequences.

4. Virtual Museum:

A virtual museum dedicated to the history of misinformation serves as an invaluable educational resource, showcasing prominent cases from the past and their profound impacts on society.

Each exhibit within this museum area provides participants with detailed historical facts, allowing them to understand the circumstances and environments in which misinformation flourished. Through these historical narratives, visitors can see patterns in how misinformation has been used to manipulate public opinion, incite social unrest, and influence political outcomes over time.

METAVERSE PLATFORM AREAS



RESOURCE LIBRARY AREA



CENTRAL STAGE AREA

5. Resource Library:

The metaverse environment also features a virtual library, meticulously stocked with a curated selection of resources that cater to a wide range of interests and educational needs. This library includes links to articles, informative videos, and reports focused on media literacy, fact-checking, and critical thinking.

Participants can access this wealth of information at any time, making it an invaluable resource for those looking to deepen their understanding of these crucial topics or seeking references for their own educational and training purposes. Strategically located on the lower floor of the metaverse environment, the library is easily accessible, with designated signs guiding users to its entrance.

6. Central Stage:

As a last area within the metaverse, the prominently placed virtual stage serves as the central hub for keynotes, expert panels, and live demonstrations. This stage is equipped to stream live events, allowing speakers to present from remote locations while their presentations are broadcasted in real-time to an audience within the metaverse.

This real-time broadcasting capability ensures that participants can experience live content interactively, fostering a sense of immediacy and engagement. It allows for the integration of global expertise, bringing together thought leaders, industry experts, and participants from around the world to engage in meaningful dialogue and knowledge exchange.

Thank you

We hope that this guide has provided you with a comprehensive understanding of how to navigate and utilize the CheckMate Metaverse Environment. This environment offers an array of tools designed to enhance your experience and facilitate diverse interactions. Users are encouraged to freely navigate through the space and explore the numerous functionalities available, from communication features like voice and text chat to advanced tools for camera use and filming. Each tool is designed to support various activities, whether you are engaging in collaborative projects, attending virtual events, or documenting your journey within the metaverse.

We sincerely hope that you find the environment both enriching and enjoyable. This virtual space represents a unique opportunity to engage with critical issues related to misinformation while leveraging advanced technologies to enhance learning and collaboration.

Should you encounter any technical difficulties or require further clarifications, our project partner staff are readily available to assist you. Do not hesitate to reach out to them directly, or alternatively, you can email us at info@syncnify.fr for prompt support.

Enjoy your journey through the metaverse, and thank you for being a part of this transformative initiative.

The logo for CheckMate features a blue checkmark icon to the left of the word "CheckMate" in a bold, blue, sans-serif font.